

BusinessLine

Sohan Lal Commodity acquires NBFC, to enter agri-financing

K. R. Srivats

New Delhi, Feb. 23:

Sohan Lal Commodity Management (SLCM), an agri-commodity warehousing management company, is foraying into the area of agricultural financing.

This diversification is being done through a Chennai-based non-banking finance company — B.P. Jain Finance & Investments, which has been recently acquired by SLCM.

Delhi-headquartered SLCM is pumping in Rs 50 crore capital into B.P. Jain Finance, which will use the funds to provide financing of warehousing receipts, Sandeep Sabharwal, CEO, SLCM told Business Line here.

For agricultural financing, the new product to be called 'Kisan Dhan' is likely to be rolled out in the market from April 1 this year, he said.

"Providing warehousing receipt finance will be complementary to what we already do (warehousing management services)".

Several high profile equity funds such as Nexus Venture Partners, Everstone Capital Venture, Mayfield Venture Partners and ICICI Bank's EIF Fund are currently invested in SLCM.

Sabharwal said the Chennai-based subsidiary will look to build a book of Rs 400 crore (for warehouse receipt financing and other agri-financing) during 2014-15.

SLCM also plans to expand into overseas markets by setting up presence in Myanmar and Malawi in the coming months, Sabharwal said.

srivats.kr@thehindu.co.in

(This article was published on February 23, 2014)

Publication	The Financial Express
Edition	All Editions
Date	28 th February 2014

SLCM to enter farm financing business

Agri-logistic company Sohan Lal Commodity Management (SLCM) announced its foray into agricultural financing. SLCM, which recently acquired Chennai-based non banking finance company, BP Jain Finance & Investments to launch agri loans, said it has all the requisite approvals in place.

Publication	Hindustan
Edition	New Delhi
Date	1st March 2014

एसएलसीएम कृषि ऋण व्यवसाय में करेगी प्रवेश

नई दिल्ली। कृषि भंडारण और रसद कंपनी सोहन लाल कमोडिटी मैनेजमेंट (एसएलसीएम) ने अगले वित्त वर्ष में कृषि ऋण के व्यवसाय में प्रवेश करने की घोषणा की है।

कंपनी इसकी शुरुआत आगामी 1 अप्रैल से करेगी। कंपनी के सीईओ संदीप सबरवाल ने कहा कि हमारी यह अनूठी पहल है। कंपनी किसानों को कफायती और सबसे बेहतर वित्तीय सेवा प्रदान करेगी।

Publication	Dainik Jagran
Edition	Kolkata
Date	2 nd March 2014

किसानों को ऋण उपलब्ध कराएगी एसएलसीएम

जागरण संवादाता, कोलकाता : अग्रणी कृषि भंडारण एवं रसद कंपनी सोहन लाल कामोडिटी मैनेजमेंट (एसएलसीएम) ने 1 अप्रैल से शुरू होने वाले नए वित्तीय वर्ष से एग्रीकल्चर फाइनेंसिंग में प्रवेश की घोषणा की है। एसएलसीएम ने हाल ही में कृषि ऋण की शुरूआत करने के लिए नॉन-बैंकिंग फाइनेंस कंपनी बीपी जैन फाइनेंस एण्ड इन्वेस्टमेंट का अधिग्रहण किया है। इसके माध्यम से 'किसान धन' के रूप में ऋण सुविधा उपलब्ध कराई जाएगी। एसएलसीएम के सीईओ संदीप सबरवाल के अनुसार कंपनी खेती एवं सम्बद्ध गतिविधियों में संलग्न उपभोक्ताओं को अत्याधुनिक समाधान उपलब्ध कराने के लिए अपने पोर्टफोलियो का विस्तार करने की प्रक्रिया में है। तकनीकी रूप से कुशल प्रक्रिया प्रबंधन प्रणाली के माध्यम से कंपनी 50 से ज्यादा कृषि उत्पादों के लिए प्रोक्योरमेंट, स्टोरेज एवं प्रीजरवेशन की सुविधाएं उपलब्ध कराती है। एसएलसीएम अब किसानों के द्वारा कंपनी के गोदाम में रखे गए कृषि आउटपुट के बदले में पूरे किसान समुदाय को किसान धन के रूप में कृषि ऋण उपलब्ध कराएगी। गोदाम में रखी जाने वाली इस सामग्री के बदले में दिया जाने वाला ऋण प्रतिस्पर्धी ब्याज दरों पर उपलब्ध कराया जाएगा।

Publication	NavBharat
Edition	Mumbai
Date	5 th March 2014

कृषि वित्त कारोबार में उत्तरेगी SLCM

मुंबई, व्या.प्र. कृषि उत्पादों के आवागमन व भंडारण सेवा देने वाली कंपनी सोहन लाल कमोडिटी मैनेजमेंट (एसएलसीएम) ने अगले वित्त वर्ष में 50 करोड़ रुपए के पूंजी निवेश से कृषि वित्त सेवा क्षेत्र में कदम रखने की घोषणा की है. कंपनी के सीईओ संदीप सभरवाल ने कहा कि आगामी वित्त वर्ष में हमें 400 करोड़ रुपए की ऋण वितरण की उम्मीद है. एसएलसीएम ने हाल ही में चेन्नई स्थित वित्तीय कंपनी बीपी जैन फाइनेंस एंड इन्वेस्टमेंट का अधिग्रहण किया.

Portal	Money Control
Link	http://www.moneycontrol.com/news/press-release/slcm-enters-agri-financingsrs-50-cr-capital_1049261.html
Date	3 rd March 2014

SENSEX 21085.33 ▼ -34.79 (-0.16%) NIFTY 6261.55 ▼ -15.40 (-0.25%)

moneycontrol.com INDIA'S NO.1 FINANCIAL PORTAL

LATEST NEWS (see all)
Supreme Court to hear Nokia plea in tax dispute on Monday
TCS has no room for error; maintain neutral: Espirito
Dec quarter GDP disappoints: What worries brokerages now?

Will Indian market ignore weak global cues?
see all

Home News Markets Mutual Funds Commodities Property Personal Finance Portfolio Messages Live TV CNBC-TV18 Eye On Money

Home Business Management Talk Markets Stocks Politics International Tech Features Videos

SLCM enters agri-financing with Rs 50 cr capital

The credit facility will be offered as 'Kissan Dhan' and the loans against warehouse receipts would be provided at a competitive [interest rate](#).

Share 1 | Facebook Share 1 | Tweet 0 | Google + 0 | LinkedIn Share 0

Free Demat Account : With [Money Back Guarantee](#)*, [Trade](#) Across Multiple Devices. Open Now!
religareonline.com/Demat_Account. Ads by Google



A gri-logistic and warehousing firm Sohan Lal Commodity Management (SLCM) today announced entry into [agricultural financing](#) from next fiscal with an initial capital infusion of Rs 50 crore. SLCM said that it has recently acquired Chennai-based non-banking finance company BP Jain Finance & Investments for launching agri-loans to farmers and traders. The company has all the requisite approvals in place.

"SLCM will infuse an initial amount of Rs 50 crore in the NBFC to augment its capital base. SLCM is targeting to build a book of Rs 400 crore during the next [financial](#) year from warehouse receipt financing and other agri financing," the company said in a statement.

At present, SLCM offers procurement and [storage facilities](#) for over 50 agri products across

major states. It would now provide loans to entire agri community against their farm output stored at the company's warehouses.

The credit facility will be offered as 'Kissan Dhan' and the loans against warehouse receipts would be provided at a competitive interest rate.

SLCM CEO Sandeep Sabharwal said: "With the launch of Kissan Dhan, we have become the [first company](#) in this sector to provide finance against farm products after arriving at valuation of the goods stored, using collateral at risk model."

Delhi-based SLCM has presence in over 70 locations across 20 states with 100 plus warehouses in India. [Venture capital firms](#) Nexus Venture Partners and Mayfield Fund have invested in the company. The company is diversifying its portfolio in line with the strategy to offer end-to-end solutions across the entire agri value chain to customer. (PTI)

ebay.in

UP TO 25% OFF ON LAPTOPS

EBAY GUARANTEE™ 100% Satisfaction or Replacement Refund

GO

Ads by Softwares Ad Options 1

Royal Sundaram General Insurance

Insure your Car with Royal Sundaram's Car Insurance.

- ▶ Hassle-free cashless claims
- ▶ No paperwork, instant policy
- ▶ Attractive premium
- ▶ Exclusive

Exclusive Add-On Covers

Get Your Quote

*Conditions apply. Insurance is the subject matter of solicitation.

MOST EXPENSIVE POWER PLAY

Narendra Modi
15852.58 ▲ 2.20%

59773

Portal	The Economic Times
Link	http://economictimes.indiatimes.com/news/news-by-industry/banking/finance/finance/slcm-to-foray-into-agriculture-financing-from-april-1/articleshow/31096508.cms
Date	27 th February 2014


 Brought to you by: 
 In association with: 
 Search for News, Stock Quotes & NAV's



SLCM to foray into agriculture financing from April 1



By Sutanuka Ghosal, ET Bureau | 27 Feb, 2014, 01:21PM IST

0 comments | Post a Comment

सेवाओं का पिटारा

राशन कार्ड या प्रमाण पत्र, पेंशन या बैंक खाता, रेल टिकट या बिल भुगतान इन सभी सुविधाओं की जानकारी देने आ रहा है NEGP प्रदर्शनी वाहन।

Track your investments easily. So you have more time for yourself.

Like Share 2,121,085 people like this.

SPOTLIGHT

Elections 2014: Changing Strategies



KOLKATA: Sohan Lal Commodity Management (SLCM), India's leading agri logistics and warehousing company, today announced its foray into agricultural financing from the new financial year that starts April 1.

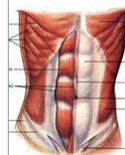
SLCM, which recently acquired Chennai-based non banking finance company, B.P. Jain Finance & Investments to launch agri loans, has all the requisite approvals in place. The credit facility will be offered as "Kissan Dhan."

SLCM is in the process of diversifying its portfolio in line with its strategy to offer end-to-end solutions across the entire agri value chain to customers engaged in farming and allied activities. Backed by technologically efficient process management system, SLCM already offers Procurement, Storage, and Preservation for over 50 agriculture products independent of geographic location and infrastructure.



SLCM will now provide loans to the entire agri community against their agriculture output stored at the company's warehouses through Kissan Dhan.

5 Veggies that KILL Belly Fat?



check out which foods help to boost your metabolism and burn stomach fat.

[which foods kill fat?](#)

Ads by Softwares

Ad Options

ET SPECIAL: Save precious time tracking your investments



India's first electric bus launched in Bangalore

India's 1st [electric bus](#) has been launched, much to the delight of green crusaders. The bus, which is air-conditioned has the capacity to seat around 41 passengers.

- After Ahmedabad, Surat gets its BRTS corridor
- Sneak Peek: Interior & exterior shots of Chennai Metro



400 Bad request

SLCM will now provide loans to the entire agri community against their agriculture output stored at the company's warehouses through Kissan Dhan. The loans against warehouse receipts will carry a competitive interest rate.

Commenting on the development, Mr. Sandeep Sabharwal, CEO, SLCM said, "This is yet another path breaking initiative from SLCM, which believes in providing best and affordable range of services to the agri environment. With the launch of Kissan Dhan, we have become the first company in this sector to provide finance against farm products after arriving at valuation of the goods stored, using Collateral at Risk model. We will extend our time tested technologically sound processes to [Kissan Dhan](#) for quick disbursement of loans to farmers and agri traders."

SLCM will infuse an initial amount of 50 crore rupees in the [NBFC](#) to augment its capital base. SLCM is targeting to build a book of 400 crore during the next [financial](#) year from warehouse receipt financing and other agri financing.

SLCM has world class processes and techniques, which have amply demonstrated their capability to change the face of agri storage industry. The company has been instrumental in devising technology and processes that have cut post harvest losses to 0.5% or a massive reduction of 95% of the normal losses. It will again be the first warehousing company from India to shortly provide the same scientific support to agri economies of new developing nations in ASEAN and African regions.

Portal	Business Standard
Link	http://www.business-standard.com/article/pti-stories/warehousing-co-slcm-enters-agri-financing-with-rs-50cr-capital-114022700747_1.html
Date	27 th February 2014

Business Standard

Friday, February 28, 2014 | 11:01 AM IST

News
 Stock
 Authors

Advanced Search

- Home
 - Markets
 - Companies
 - Opinion
 - Politics
 - Technology
 - Specials
 - Personal Finance
 - Portfolio
 - My Page
- [BS Headlines](#)
[News Now](#)
[Economy](#)
[Finance](#)
[Current Affairs](#)
[International](#)
[Management](#)
[Beyond Business](#)
[The Strategist](#)
[Weekend](#)
[BS 1000](#)

Warehousing co SLCM enters agri-financing with Rs 50cr capital

Press Trust of India | New Delhi February 27, 2014 Last Updated at 17:10 IST

RELATED NEWS

- On safety, small-car-makers must look beyond pricing (Column: Eagle Eye)
- Banking services hit in the northeast
- Million-dollar bank hacking kit Russian developer pleads guilty to charges in US
- NSA racing to build 'mother of all encryption breaker' quantum computer
- Day-long strike hits banking operations

3 BHK @ 1.4 Cr Onwards
 3/4 BHK In Gurgaon Sec 109, Delhi Proj :Tourmaline. Know More Now!
www.hdfcred.com/ATS_Infrastructure

Agri-logistic and warehousing firm Sohan Lal Commodity Management (SLCM) today announced entry into [agricultural financing](#) from next fiscal with an initial capital infusion of Rs 50 crore.

SLCM said that it has recently acquired Chennai-based non-banking [finance company](#) BP Jain Finance & Investments for launching agri-loans to farmers and traders. The company has all the requisite approvals in place.

"SLCM will infuse an initial amount of Rs 50 crore in the NBFC to augment its capital base. SLCM is targeting to build a book of Rs 400 crore during the next [financial](#) year from warehouse receipt financing and other agri financing," the company said in a statement.

At present, SLCM offers procurement and [storage facilities](#) for over 50 agri products across major states. It would now provide loans to entire agri community against their farm output stored at the company's warehouses.

Automotive Industry India

[Automotive Industry](#) Growing Indian and Intel!
[Free Report](#) Get By Wipro
www.wipro.com/Automotive_Industry

Ads by Google

The credit facility will be offered as 'Kissan Dhan' and the loans against warehouse receipts would be provided at a competitive [interest rate](#).


SLCM CEO Sandeep Sabharwal said: "With the launch of Kissan Dhan, we have become the [first company](#) in this sector to provide finance against farm products after arriving at valuation of the goods stored, using collateral at risk model."

Delhi-based SLCM has presence in over 70 locations across 20 states with 100 plus warehouses in India. [Venture capital firms](#) Nexus Venture Partners and Mayfield Fund have invested in the company.

Quick Links

↓

**DOWNLOAD
THE FINANCE
CAREER GUIDE
NOW.**



CFA Institute

Reply

**EVERY SMALL BUSINESS IDEA
HAS A BIGGER POTENTIAL**

Realise it with Union Bank's
MSE Loans
 Hassle-free Loans for Micro & Small Businesses

Attractive Rate of Interest	Collateral-free loans upto ₹100 lakhs under CGTMSE scheme
-----------------------------	---

यूनियन बैंक Union Bank of India

अच्छे लोग, अच्छा बैंक Good people to bank with

Helpline : 1800 222244 080-25300175 (Chargeable)
www.unionbankofindia.co.in

Portal	Vccircle
Link	http://www.vccircle.com/news/finance/2014/02/24/pe-backed-sohan-lal-commodity-buys-nbfc-foray-agri-financing
Date	24 th February 2014

www.vccircle.com/news/finance/2014/02/24/pe-backed-sohan-lal-commodity-buys-nbfc-foray-agri-financing

Home | About | VCCEdge | TechCircle | Training | Events | Mobile Apps Join us: Enter Keyword ... Search

SATURDAY, MARCH 01, 2014 12:02:18

VCCIRCLE **2014**
VCCIRCLE CONSUMER & RETAIL INVESTMENT SUMMIT

Darshan Mehta
CEO
Reliance Brands

Dinesh Chhabra
CEO
Usha International Ltd

DEALS CONSUMER FINANCE HEALTHCARE INFRASTRUCTURE MANUFACTURING TMT VCCTV MORE

M & A PRIVATE EQUITY VENTURE CAPITAL PUBLIC EQUITY

CRISIL
A STANDARD & POOR'S COMPANY

Empower your enterprise to stand out among 30 million MSMEs in India with improved access to finance

Get the CRISIL SME Ratings Advantage for your MSME

TODAY!

HOME >> M & A >>

Monday, February 24, 2014 - 15:28 IST COMMENTS (0) Like 1 Share Tweet 1 Share 2

Enter email for free Newsletter

VCCIRCLE PREMIUM
Get your account today

Advertisement

Asia's Safest, Asia's Best
SME Banking Solutions

PE-backed Sohan Lal Commodity buys NBFC to foray into agri-financing

BY TEAM VCC

Sohan Lal has previously raised funding from Everstone, Mayfield and Nexus Venture Partners.

Sohan Lal Commodity Management Pvt Ltd (SLCM) has acquired non-banking finance company (NBFC) BP Jain Finance & Investments, as per a report in *The Hindu*.

The firm is putting up Rs 50 crore into the Chennai-based NBFC which would allow it to enter the area of agricultural financing.

BP Jain Finance will use the funding to provide finance to warehousing receipts and it is planning

"Providing warehousing receipt finance will be complementary to what we already do (warehousing management services). Chennai-based subsidiary will look to build a book of Rs 400 crore (for warehouse receipt financing and other agri-financing) during 2014-15," said Sandeep Sabharwal, CEO, SLCM.

Founded in 1971, New Delhi-based SLCM provides agri-commodity warehouse management and procurement solutions to farmers, processors, traders, agri exchanges and government across 70 locations and 12 states in the country. The firm's warehousing capacity exceeds 150,000 MT with warehousing space of over one million sq ft.

In November 2012, Everstone Capital and Emerging India Fund (EIF), a fund under ICICI Bank, had together invested \$23.5 million (Rs 129.3 crore) in SLCM for 25.55 per cent and 6.93 per cent stake, respectively. In March 2011, Mayfield India and Nexus Venture Partners invested Rs 35.5 crore in the company.

(Edited by Joby Puthuparampil Johnson)

CC Avenue PAYMENT GATEWAY

CCAvenue S.N.I.P.
Monetise your Facebook Likes